



REPAIR PARTS LIST

Model SC882A

Commercial Upright

Base and Hood - SC882A

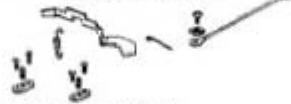
54097-5 HOOD & NAMEPLATE ASS'Y.
77147 NAMEPLATE



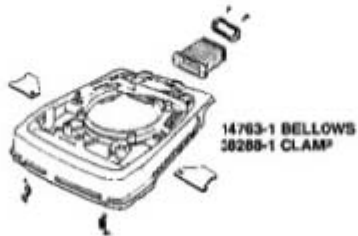
56383-15V AIR INLET DUCT ASS'Y. (R.H.)
49052-3 FCAM TAPE



56382-15V AIR INLET DUCT ASS'Y.
49052-3 FOAM TAPE



53425-24 BASE ASS'Y.
NOT ILLUSTRATED
24964A CAM (R.H.)
24965A CAM (L.H.)
53118 RIVET-CAM PKG. 10 2 USED
53153 WASHER PKG. 10 2 USED



52334 FAN CHAMBER REPLACEMENT KIT (INCLUDES)
30517 MOTOR SEAL GASKET
13770-1 FAN CHAMBER COVER
53238-17 SCREW
PKG. 10 2 USED

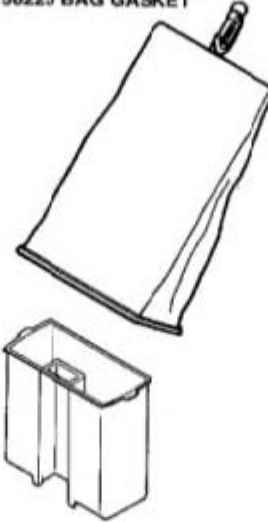


Base and Hood - SC882A

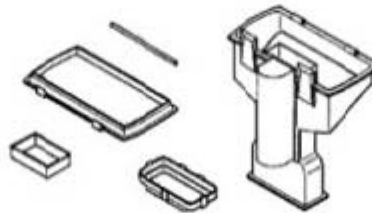
Ref #	Part	Description	Comments	Qty
1	54097-5	HOOD & NAMEPLATE ASSY - P		
2	77147			
3	53143	SCREW PACKAGE (10)		
4	38053-4			
5	53228-2	SCREWS - PACKAGE 10		
6	53160	CABLE CLAMP PACKAGE		
7	53238-13	SCREW PACKAGE		
8	53238-17	SCREW PACKAGE		
9	53214-1	WIRE SPLICE 5		
10	49052-3	TAPE - FOAM		
11	56383-1SV	DUCT ASSEMBLY (R)		
12	54352-15	MOTOR ASSEMBLY - PACKAGED		
13	30517	GASKET - MOTOR SEAL		
14	56382-1SV	DUCT ASSEMBLY (L)		
15	53097	SPRING - FOOT PEDAL PKG (
16	53238-17	SCREW PACKAGE		
17	53140	CLAMP & SCREW ASSY PKG		
18	53425-24	BASE ASSEMBLY - CARTONED		
19	24964A-1	CAM (RIGHT)		
20	24965A-1	CAM (LEFT)		
21	53118	RIVET - SHOULDER PACKAGE		
22	53133	STEEL WASHERS - PACKAGE 1		
23	53228-7	SCREWS - PACKAGE 10		
24	38288-1	CLAMP - BELLOWS		
25	14763-1	BELLOWS		
26	36263	COVER - WHEEL		
27	53117	SPRING - HOOD PACKAGE (10		
28	52334	FAN CHAMBER REPLACEMENT K		
29	13770-1	COVER - FAN SCROLL		
30	53238-17	SCREW PACKAGE		
31	53188	WASHER PACKAGE		
32	53213-4	NUTS - PACKAGE 10		
33	54173-1	WIRE ASSY (GROUNDING)		
34	54177	WIRE & TERMINAL ASSY		

Bag and Dust Cup - SC882A

54422-10 BAG ASS'Y.
58223 BAG GASKET



14844-12 DIRT CUP ASS'Y. (INCLUDES)
54561-1 DIRT CUP SUPPORT
& LATCH ASS'Y.
55399-1 COVER PIN
14765-1 BAG FLANGE
38289 GASKET
26266-2 CLAMP
01959-313N DIRT CUP



57838B-1 HARDWARE PKG.

2-HANDLE SCREW ASS'Y.
2-BAG SCREW
1 CABLE CLAMP
1-SCREW

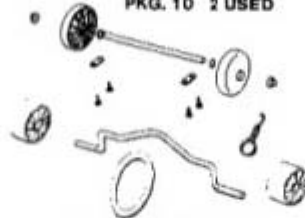
Bag and Dust Cup - SC882A

Ref #	Part	Description	Comments	Qty
1	54422-10	BAG ASSEMBLY - PACKAGED		
2	58223	GASKET - DIRTCUP		
3	14844-12			
4	54561-1	SUPPORT & LATCH ASSY - PK		
5	55399-1	PIN COVER		
6	14765-1	FLANGE - BAG (OUTER)		
7	38289	GASKET		
8	26266-2	CLAMP		
9	01959-313N	DIRT CUP		
10	57838B-1			

Furniture Guard and Brushroll - SC882A

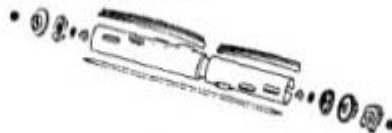


37234-3 WHEEL & AXLE ASS'Y. (INCLUDES)
53110 WHEEL WASHER
 PKG. 10 2 USED
53121 PUSHNUT
 PKG. 10 2 USED



NOTE
PT. NO. 53270
DISTURBULATOR ASS'Y.
INCLUDES

13236-3 DISTURBULATOR TUBE
52262-4 BRISTLE STRIP ASS'Y.
49899 FELT WASHER
54256 BEARING RETAINER
 PKG. 2 2 USED
26057A DISTURBULATOR CAP
 2 USED
53156 LOCK NUT
 PKG. 10 2 USED
53184 KLIPRING
 PKG. 10 2 USED
25937 SHAFT



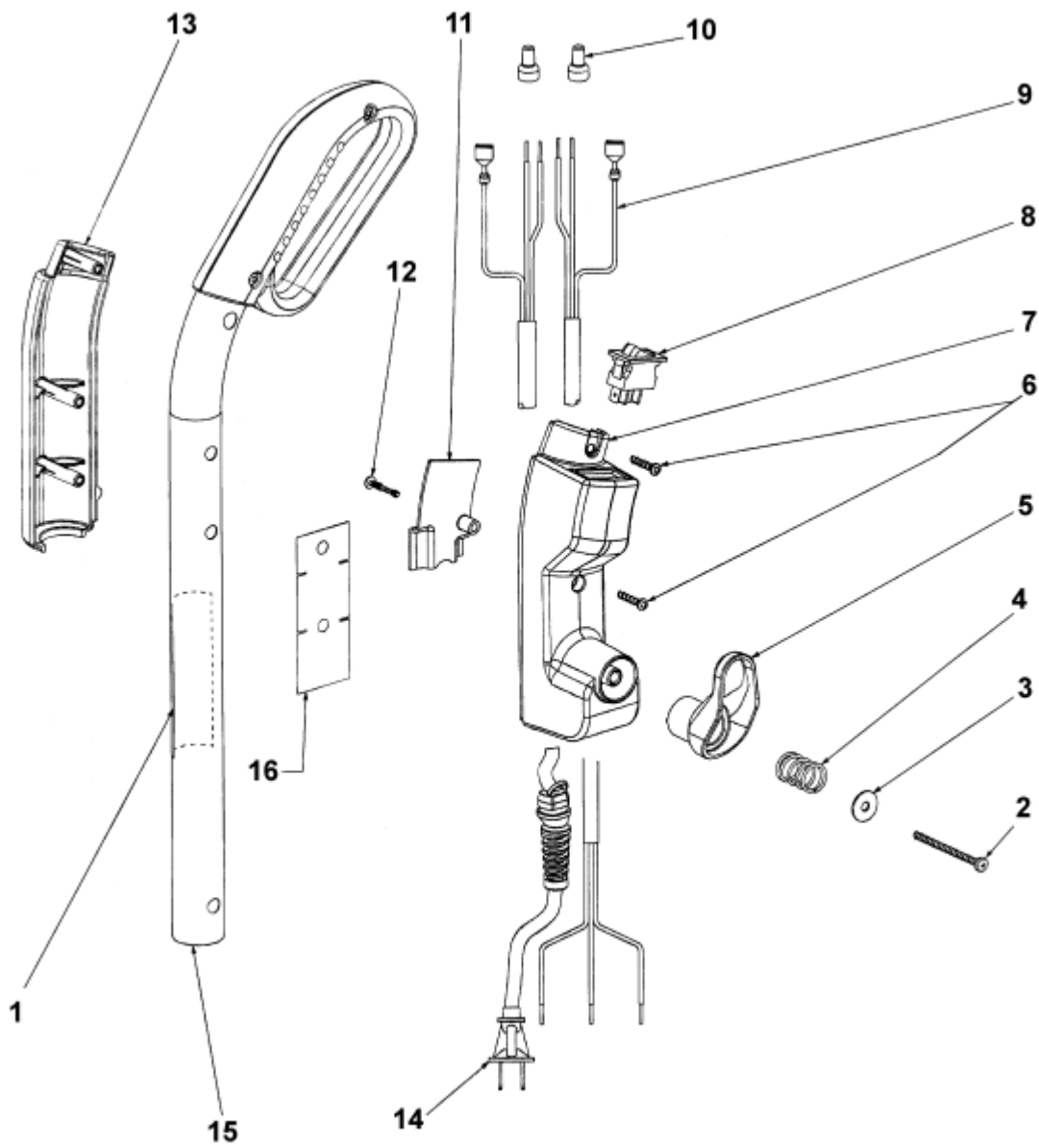
25922-1 BOTTOM PLATE ASS'Y. (INCLUDES)
48538 FOAM TAPE



Furniture Guard and Brushroll - SC882A

Ref #	Part	Description	Comments	Qty
1	37234-3			
2	53110	WASHER - WHEEL PACKAGE (1		
3	53121	PUSH NUT PACKAGE (10)		
4	76334			
5	76369-1			
6	37183	AXLE - REAR		
7	53201	CLAMPS - PACKAGE 10		
8	53238-11	SCREW PACKAGE		
9	53076-2	SPRING & AXLE PACKAGE (6)		
10	35859A-1	WHEEL - FRONT		
11	35947A	AXLE - FRONT		
12	30563A	BELT - DRIVE (STYLE RD)		
13	13236-3	TUBE - DISTURBULATOR		
14	52282-4	BRISTLE STRIP PACKAGE		
16	54256	BEARING & RETAINER ASSEMB		
15	26057A	CAP - DISTURBULATOR		
17	53158	LOCK NUT PACKAGE		
18	53184	KLIPRING PACKAGE		
19	25937	SHAFT - DISTURBULATOR		
20	26059A	CAP - COVER		
21	54256	BEARING & RETAINER ASSEMB		
22	25922-1	BOTTOM PLATE ASSEMBLY		
23	46538-4	TAPE - FOAM		
24	63233	AXLE BUSHING - PACKAGED		
25	43270			

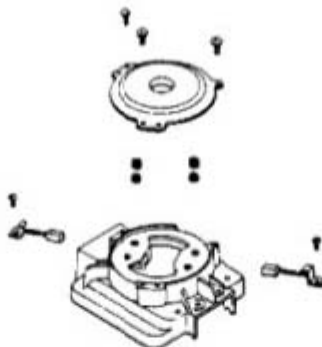
Handle - SC882A



Handle - SC882A

Ref #	Part	Description	Comments	Qty
1		Label		
2	53238-18	SCREW PACKAGE		
3	60946	WASHER - PACKAGED		
4	60945	SPRING - PACKAGED		
5	28316-355N	RETAINER - CORD		
6	53197-1	SCREW PACKAGE		
7	76643-355N			
8	28073A	SWITCH - ROCKER		
9	76767			
10	60192-1	WIRE SPLICE 5		
11	59741-316N	SHIELD - WIRING		
12	60947	SCREWS - PACKAGED		
13	76644-355N			
14	52370-15	CORD & TERMINAL ASSY 30 8		
15	15774-2SV			
16	76644-355N			

Motor - SC882A



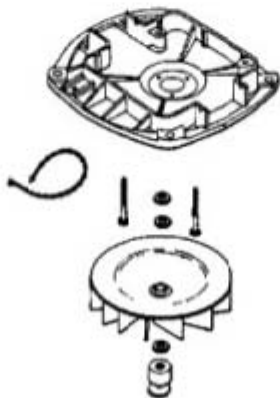
54395-4 ARM, FAN & BEARING ASSEMBLY

53068-1 BEARING PKG. 5 1 USED
30474A FAN



54169-1 MOTOR BASE ASSEMBLY

42675 BEARING & RETAINER ASS'Y.
53088-1 BEARING PKG. 5 1 USED
53187-1 RIVET PKG. 10 3 USED



Motor - SC882A

Ref #	Part	Description	Comments	Qty
1	53158	LOCK NUT PACKAGE		
2	20217E	RETAINER - UPPER BEARING		
3	53213-4	NUTS - PACKAGE 10		
4	53222-3	LOCKWASHERS - PACKAGE 10		
5	53219-2	SCREWS - PACKAGE 10		
6	30478	MOTOR BRUSH ASSEMBLY		
7	54396	MOTOR COVER ASSEMBLY - LA		
8	54395-4	ARMATURE, FAN & BRG ASSY-		
9	53088-1	BALL BEARING - PACKAGE		
10	30474A	FAN - MOTOR COOLING		
11	53441-2	FIELD ASSEMBLY - PACKAGED		
12	54169-1	MOTOR BASE ASSEMBLY		
13	42875	BEARING RETAINER ASSY-W/L		
14	53187-1	RIVET PACKAGE		
15	56802-2	TIE - CABLE (PURCHASED)		
16	53142	SCREW PACKAGE (10)		
17	53148	WASHER - FAN PACKAGE (10)		
18	53188-1	WASHER PACKAGE		
19	77247-355N			
20	37012-2	PULLEY - MOTOR DRIVE		