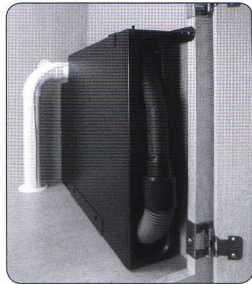
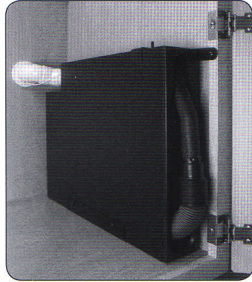


# Vroom Installation Guide



### Two Vroom Sizes available:

- 1) Fits into 18" and larger base cabinets (commonly found in bathrooms) houses 18' of retractable hose.
- 2) Fits into 22" and larger base cabinets (commonly found in kitchens and laundry rooms) houses 24' of retractable hose.

### The Vroom is installed in three easy steps: *(detailed instructions below)*

- 1) Select a location and install the central vacuum tube through the back wall or the floor of the cabinet. Preferably not directly behind or below the unit.
- 2) Determine the position of the Vroom in the cabinet
  - A) Determine floor bracket position
  - B) Determine top bracket position
- 3) Secure all brackets and connect central vacuum tubing

### Planning a location for the Vroom

Base cabinets are ideal for Vroom placement. Be certain to check the floorplan for installation obstacles and to ensure the hose will reach all desired coverage areas.

Some obstacles you may need to work around include sink basins, garbage disposals, water lines, drain lines and HVAC. Planning should allow for adequate clearance for the Vroom, tubing and fittings. Considering these variables in advance will make the installation smoother and provide a finished appearance.

### Tools required:

- Drill
- 2-1/4" hole saw & 5/64" drill bit
- Phillips screw driver
- Pencil
- Tape measure
- PVC solvent
- May require 8" drill extension

## Installation

### There are two types of installations:

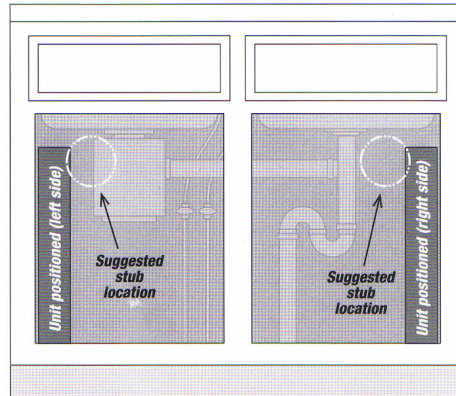
**Through the Wall Installation-** tubing is brought through the back of the cabinetry. Easiest in new construction or when studs are exposed.

- 1) Determine location of the finished cabinet. (If locating the Vroom in the sink cabinet, locate the sink drain.)
- 2) Stub tubing out at the same level as the top of the fitting on the unit (14.75" from cabinet floor to tube center is optimum).
- 3) It is best if the stub out is not directly behind the Vroom, but offset to allow for a combination of fittings (and possibly tubing) to attach the vacuum line to the Vroom at finish.
- 4) Cap the stub tube to keep dirt/debris out of tubing during construction.

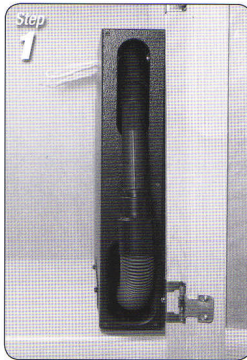
**Through the Floor installation-** tubing is brought through the floor of the cabinetry. Typically used for retro-fit and island installations where there is access underneath the cabinet.

**NOTE:** In retrofits you will need to find the Central Vacuum Trunk line and plan a route from the trunk line to the cabinet location. Check your planned tube route for existing obstructions such as plumbing, HVAC and electrical lines.

- 1) Locate the trunk line closest to the selected Vroom location.
- 2) Determine the location in the trunk line to insert a 45° Y or 90° TY.
- 3) Cut and deburr the trunk line.
- 4) Insert the Y or TY.
- 5) Complete with the appropriate tubing and fittings to position the tube line under the desired cabinet.



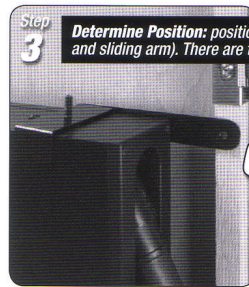
## Positioning the unit...



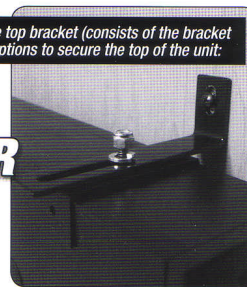
**Step 1**  
Set the product inside the cabinet for positioning. The side of the unit should be lined up with the door frame opening to allow clearance for removing the hose handle without hitting the door frame.



**Step 2**  
From the side, the unit should be positioned as far forward as possible while still allowing the cabinet door to close without hitting the hose handle.

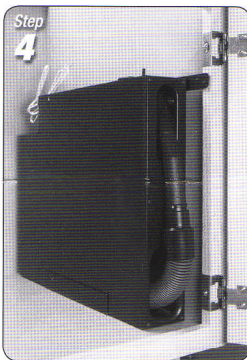


**Step 3**  
**Determine Position:** position the top bracket (consists of the bracket and sliding arm). There are two options to secure the top of the unit:

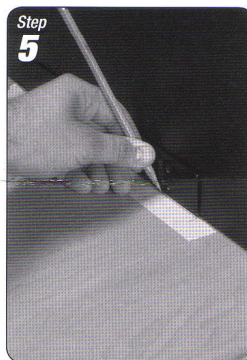


**OR**  
**Secure the unit to the cabinet side wall.** Pre-drill a pilot hole in the side wall before driving screw to prevent splitting the wood (use a 5/64 drill bit).

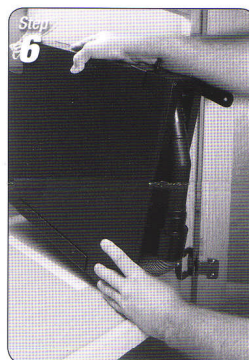
*Do not insert screws at this time. The Vroom will need to be removed (see step 6).*



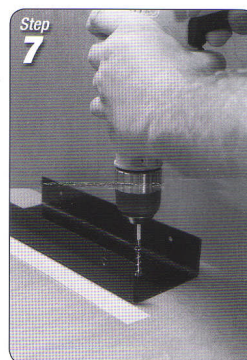
**Step 4**  
Check to make sure that there is clearance for the door and proper hose operation.



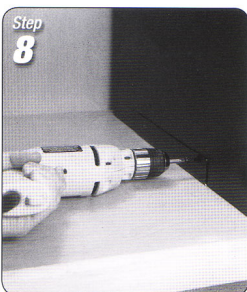
**Step 5**  
Positioning the Base Bracket. Position the unit and make reference marks for the bracket. (A piece of masking tape to mark on works well.)



**Step 6**  
Remove the unit

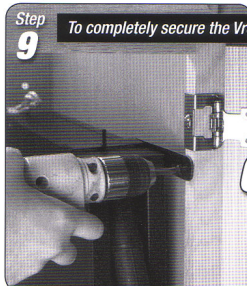


**Step 7**  
Align the bracket to the reference marks and predrill the 2 holes. Install the 2 screws through the bracket into the floor of the cabinet.

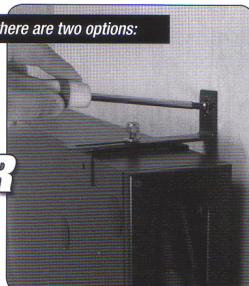


**Step 8**  
Place the Vroom back into the bracket and properly position. Then use two black wood screws (provided) to secure the Vroom to the Base Bracket. **WARNING:** using oversized screws can damage the internal workings of the Vroom unit.

## Securing the unit...



**Step 9**  
**To completely secure the Vroom there are two options:**  
To secure to the door frame, use a black wood screw to secure the sliding arm (pre-drill: see step 3).

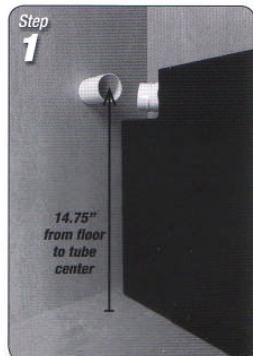


**OR**  
To secure to the side wall use a Phillips screw driver and a black wood screw (pre-drill: see step 3). **CAUTION:** Do not over tighten the screw.

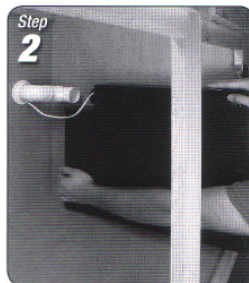
## Connecting to the Vacuum Line

### "Through the wall" installations

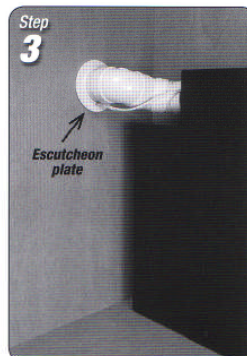
**ATTENTION:** DO NOT GLUE THE VACUUM LINE TO THE FITTING PROVIDED ON THE UNIT: IT IS A FRICTION FIT FOR EASY REMOVAL.



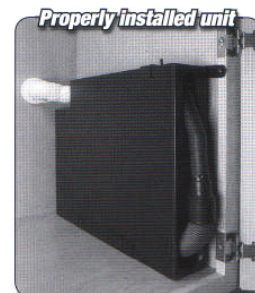
With the unit in place trim out the stub (from your trunk line) by using tubing to tie into the Vroom.



Dry fit your assembly with the escutcheon plate (label side down) and wire in place (the escutcheon plate is notched for the wire to run through it along side the tubing). Glue and assemble your fittings/tubing and attach to the trunk line. Do not glue the vacuum line to the black fitting on the unit. Attach the low voltage wires from the Vroom to the low voltage wires coming from the trunk line using wire nuts.



Push any excess wire through the escutcheon plate.



To test the unit, simply lift the handle out of the docking station until you feel the switch engage (90 degrees). This will turn on the central vacuum unit and activate the Vroom.

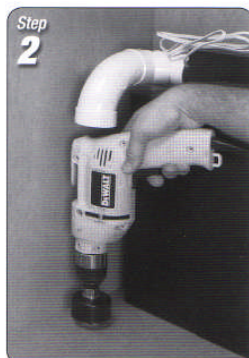
### "Through the floor" & "Retrofit" installations:

It is always best to accurately measure for drilling considering all possible obstacles. Drill a pilot hole with 1/8" bit (long) and check from lower level to make sure you will be clearing those obstacles. Make sure you have access to the trunk line.

**ATTENTION:** Do not glue the vacuum line to the black fitting (provided) on the unit: it is a friction fit for easy removal.



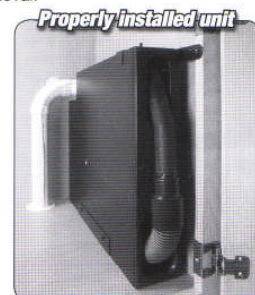
Locate the path for your vacuum line from the trunk line and make reference marks for drilling. Drill a pilot hole to ensure a clear path below the cabinet. Check underneath to ensure there are no obstructions before drilling.



Using a hole saw bore a 2-1/4" hole through the cabinet and the floor.



Dry fit your combination of fittings/tubing to ensure good positioning. Remove your dry fit assembly, glue assembly and attach to the trunk line. Do not glue the vacuum line to the black fitting on the unit. Be sure to slide the escutcheon onto the tubing before gluing. Attach the low voltage wires from the Vroom to the low voltage wires coming from the trunk line using wire nuts.



To test the unit, simply lift the handle out of the docking station until you feel the switch engage (90 degrees). This will turn on the central vacuum unit and activate the Vroom.